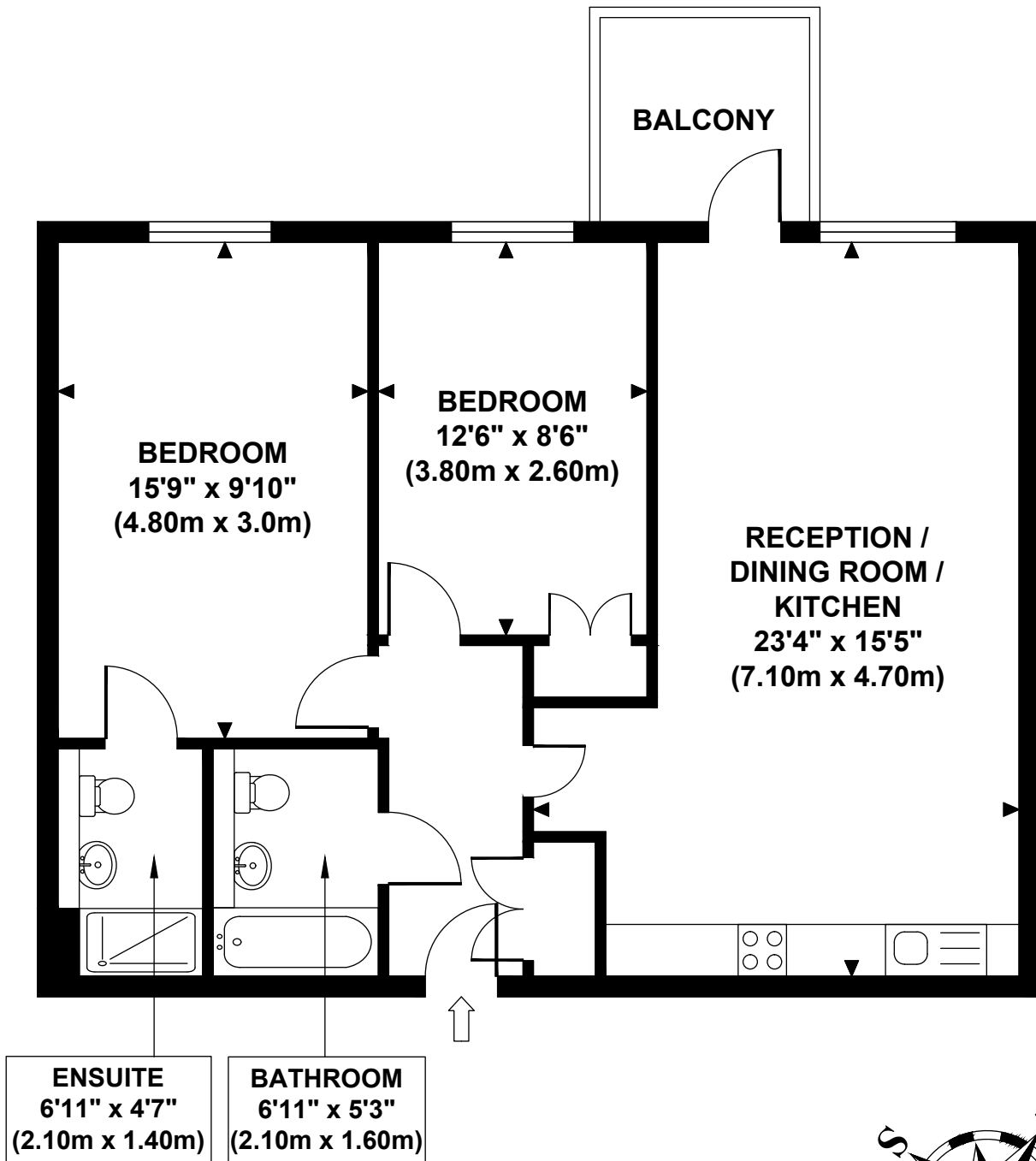
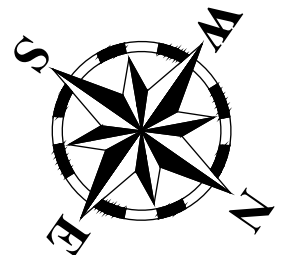


ADELAIDE WHARF

Approximate Gross Internal Area
710 sq ft / 66.0 sq m



**FOURTH FLOOR
GROSS INTERNAL
FLOOR AREA 710 SQ FT**



Although every attempt has been made to ensure accuracy,
all measurements are approximate and no responsibility is taken for any error, omission, or mid-statement.
This floor plan is for illustrative purposes only and not to scale. Measured in accordance to RICS standards.
GB PRO PHOTOS